



BE INSPIRED  
CREATE YOUR IDEAL HOME





# BE INSPIRED WITH WEATHERGLAZE

---

Weatherglaze windows was first established in Ireland in 1968 and quickly established itself as 'the' name in windows in Ireland. Originally manufacturers of aluminium windows, it was 1985 when Weatherglaze started producing double glazed pvc windows and doors.

For decades the Weatherglaze name has been synonymous with double glazing, and throughout the past four decades, people have been often heard saying that they are 'having their house Weatherglazed'.

Weatherglaze operate from an 85,000ft factory in Gorey, Co Wexford. Not only do we manufacture all our own windows and doors here, but we also make our own double glazed sealed units on a state of the art manufacturing line, delivering the most technologically advanced double glazing units available anywhere in Ireland or the UK.







## CONTENTS

---

### Introduction

Doors, windows and conservatories can say a lot about your home - find your individual style.

### Windows

Choose attractive, durable and weather-resistant windows that complement the rest of your home.

### Doors

A range of door options that not only act as a barrier but enhance the look and character of your home.

### Conservatories

See our cleverly constructed conservatories that are comfortable places to relax and enjoy all year round.

### Technical details

Comprehensive range of product styles and finishes will help you choose the products that are right for you.



“THE HIGHEST-PERFORMING  
WINDOWS AND DOORS - WE  
WOULDN'T PUT OUR NAME  
ON ANYTHING ELSE”



# INDIVIDUALITY AND STYLE TO MEET YOUR EVERY NEED

---

Bricks and mortar may form the foundations of your house, but it's the doors and windows that really create your home's personality.

---







With our comprehensive range of high quality PVCu windows, doors and conservatories, you can be sure to find the products that will suit your individual style. With minimal maintenance, and maximum durability, they'll suit your lifestyle too.







“WE’LL HELP YOU CHOOSE  
THE PRODUCTS THAT ARE  
RIGHT FOR YOU”

# SAFETY AND COMFORT FOR EVERY GENERATION

---

As well as adding to the look of your home, your doors and windows need to offer you protection – both from unwanted visitors and the elements.

---



## **The latest technology**

State-of-the-art door and window locking systems to enhance your home's security and give you extra peace of mind.

Products manufactured using the very latest technology, so you can feel safe, secure and comfortable, whatever the time of year.

## **The look to meet your every need**

We'll help you select the products that are right for your home – whether you're looking for a simple, elegant style, or a more ornate design, with decorative glass, panels or hardware.

Whatever you go for, our doors and windows not only look fantastic, they last for years. So as well as enhancing your environment, you'll be adding value to your home.





# THE BEST PERFORMING WINDOWS

## that money can buy

We all want the best from replacement double glazing. That's why our windows stand apart. From styling to performance to saving energy, the advanced design gives you a comfortable, secure, energy-efficient home.



### Reduce wasted energy. Cut bills.

Choosing our windows to replace single glazed or older double glazed units saves money from day one. In fact, it could reduce your heating costs by up to 20% - perhaps worth up to €386 a year.

### Reduce condensation and noise.

Lower heat loss at window edges makes our glass 3-4°C warmer - cutting condensation by up to 80%. Using high performance gaskets, our double glazing reduces noise pollution, too.

## Our windows make more of ambient heat

In winter, the energy efficient coated glass used in our windows retains warmth within the home. It's also designed to exploit radiant heat energy from the sun. These properties result in significant fuel savings compared to a single glazed dwelling.

### Replacing single glazed...

### Could save...

...changing timber framed windows to our energy rated windows saves:

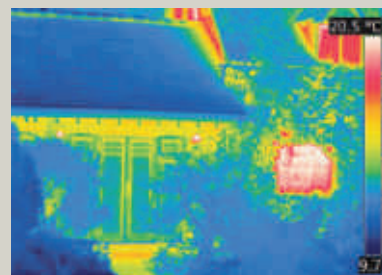
**€168.00**  
(0.72 tonnes CO<sub>2</sub>)

...changing aluminium framed windows to our energy rated windows saves:

**€386.00**  
(1.65 tonnes CO<sub>2</sub>)

Average gas heated bungalow/semi.  
GGF carbon calculator @ 2% inflation.

**Right:** The images show just how effective fitting energy efficient windows to your property can be. The right hand side of the property still has the original windows - the reds and pinks show heat escaping. However, the new extension on the left is fitted with energy efficient windows, the lack of reds and pinks proving they help dramatically reduce heat loss.





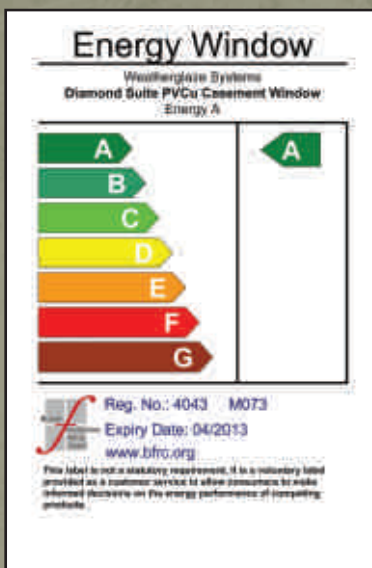


## THE NEXT WINDOWS YOU CHOOSE COULD REDUCE WASTED HOME ENERGY BY UP TO 20%

If the windows in your home consist of single glazed or older double glazed units, replacing them with our energy efficient windows will save you money. It can reduce the energy you need to heat or cool your home by up to 20%.

### Energy efficient windows - at the right price

Our energy efficient window system brings together market leading components to deliver exceptional performance. This means quality performing glass and the best performing 'warm edge' spacer technology is used in the sealed unit. Our window profiles include Q-Lon weather seals, multi chamber construction, high security locking and stainless steel hinges.



## Using less energy means less CO<sub>2</sub>

Science suggests man-made emissions play a major role in global warming and, in turn, influence climate change. Home energy use alone accounts for 27% of UK carbon dioxide (CO<sub>2</sub>) emissions which contribute to climate change.

The Glass and Glazing Federation calculates that if all UK replacement windows installed were B and C rated, each household could save the energy equivalent to making 34,000 cups of tea!



All our Energy Efficient windows achieve C rated or better energy efficiency. Put simply, they're the most energy efficient windows your money can buy. Decide what A, B or C rated performance you want; we'll do the rest.



# “CHOOSE BOTH ATTRACTIVE AND DURABLE WINDOWS”

New windows can enhance the look of your home, both from the inside and out. We offer a wide range of styles to suit all types of properties.



Opt for traditional white frames, or a natural woodgrain effect in golden oak, rosewood or mahogany. Then decide if you'd like Georgian, stained, diamond lead or bevelled glass.

Whatever style you go for, you'll find our windows aren't just pleasing on the eye, they're practical too. Minimal maintenance means their good looks will last well into the future.



SAVE MONEY  
CUT WASTED HOME ENERGY BY UP TO

# 20%

If your windows consist of single glazed or older double glazed units, replacement with energy efficient windows will save you money. It can cut the energy you need to heat or cool your home by up to 20%.

You could also:

- Reduce condensation in your home
- Reduce your carbon footprint
- Reduce your energy bills
- Add value to your property







# CASEMENT WINDOWS

---

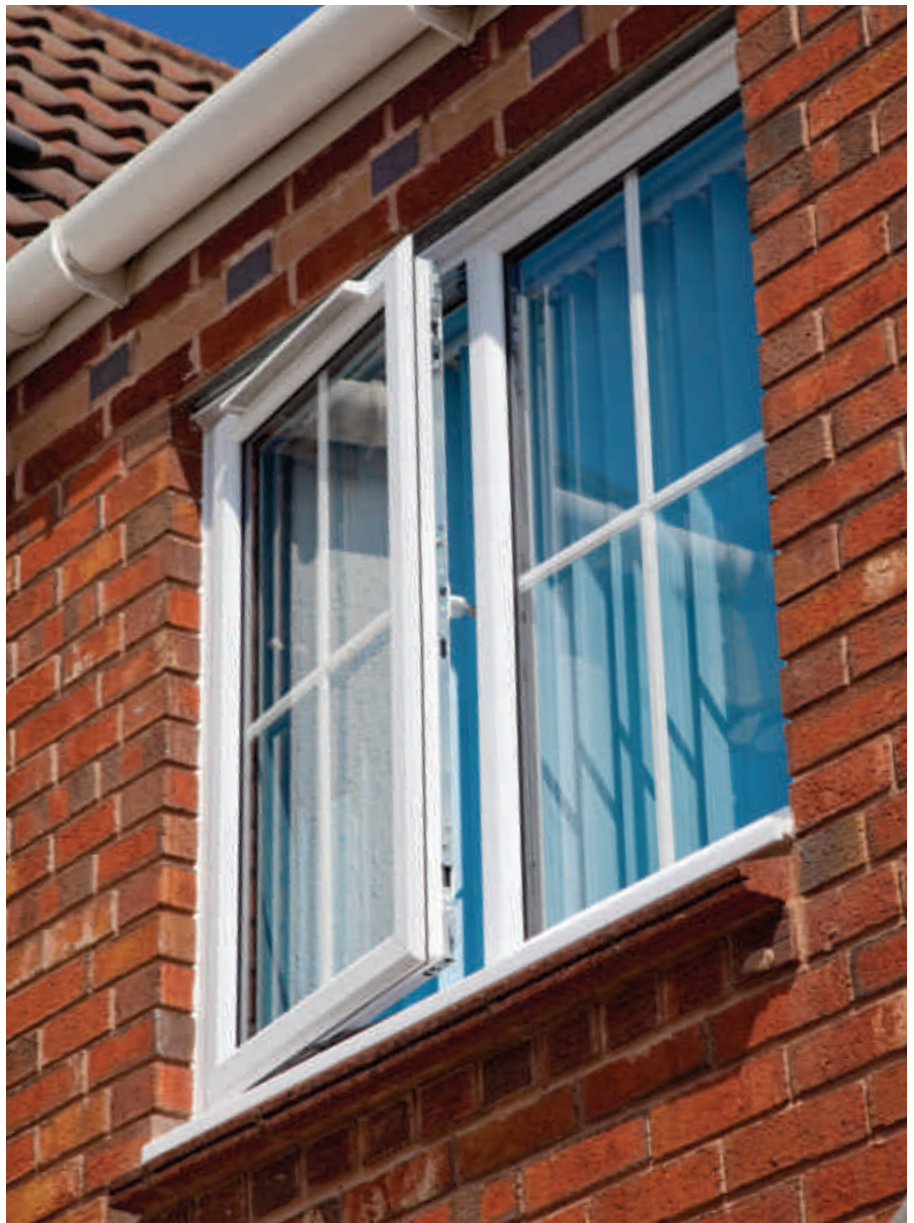
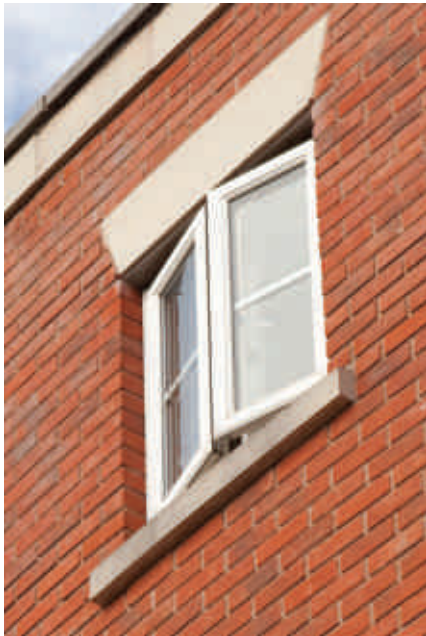
Our range of casement windows is our most popular design, offering security, energy efficiency and is available in a multitude of styles and finishes to enhance the look of your home.

Whatever style you go for, you'll find our casement windows aren't just pleasing on the eye, they're practical too. Minimal maintenance means their good looks will last well into the future.

---







## Features and benefits

All our casement windows feature - energy efficient glazing and our unique high performing Q-Lon weatherseal ensures your windows will perform year after year.

Other key options include;

- Extensive choice of designs (see page 'WINDOWS/8').
- Available in a variety of foiled finishes, both woodgrain and solid colours.
- Range of handle colours to complement the finish of your windows.
- Wide range of glass designs, from leaded to Georgian bars.



### Design options

[> GO TO 'WINDOWS/8'](#)



### Finish options

[> GO TO 'TECHNICAL/3'](#)

REDUCE  
CONDENSATION  
IN YOUR HOME BY UP TO  
**80%**

Whenever we cook, bathe or even breathe, we increase water vapour in our home. When saturated air contacts a cold surface, condensation forms, promoting bacterial growth and mould. Both can compound respiratory problems such as asthma.

**Our windows are typically 3-4°C warmer than those with metal spacer bars, reducing condensation by up to 80%.**

“CHOOSE ATTRACTIVE, DURABLE  
AND WEATHER RESISTANT  
WINDOWS THAT COMPLEMENT  
THE REST OF YOUR HOME”

# TILT AND TURN WINDOWS

The Tilt and Turn window allows you to enjoy the benefits of a truly versatile product, offering both aesthetic and practical options. This design of window is available in a number of style options, all allowing larger opening areas to be achieved, thus this product can be used for fire escape openings.



## **Versatile and convenient**

Tilt and turn allows you to tilt the window inwards, for ventilation, or alternatively open fully inwards which allows for easier cleaning. Furthermore, this product can also be incorporated within bay and bow style windows and is available with a variety of glazing options, including Georgian bar, leaded lights and obscure glass.







Suitable for both replacing existing timber sliders in period buildings and adding character to any development, vertical sliders retain all the traditional features of their familiar counterpart but with the enhanced benefits that modern PVCu systems provide.

## ENERGY EFFICIENT WINDOWS

Reduce energy bills

> GO TO 'INTRODUCTION/5'



# VERTICAL SLIDER WINDOWS

The vertical sliding sash window range combines the elegance of traditional sash windows with the benefits of modern materials. Manufactured from PVCu they are strong, will not rot, warp or require repainting; ensuring that they retain their colour and shape throughout the years with the minimum amount of maintenance.



Design options

> GO TO 'WINDOWS/8'



Finish options

> GO TO 'TECHNICAL/3'

# BAY AND BOW WINDOWS

Attractive, durable and versatile, our bays and bows will suit any style of property and provide valuable extra space in your home.



## Bay Windows

Bay windows retain the traditional look of your home creating space, character and allowing light to flood your room.




## Bow Windows

Our bow windows offer you the versatility of creating the illusion of space and depth by allowing more light into your home without the need for additional building work.



 **Design options**  
> [GO TO 'WINDOWS/8'](#)

 **Finish options**  
> [GO TO 'TECHNICAL/3'](#)

## REDUCE OUTSIDE NOISE LEVELS

WITH OUR STATE-OF-THE-ART  
WINDOWS AND DOORS

**Nowadays it's difficult to avoid external noise.**

Whether you live near a major road, under a flight path or near some vocal wildlife, noise pollution can be a cause of major disruption. With double-glazed insulation and our high performance window seals, our energy efficient windows will help reduce external noise pollution.





# DESIGN OPTIONS

---

It's the detail that counts. Make your mark with our design options - creating your own individual style.

---



## **Georgian Bar**

This style option allows you to tailor your window glazing to create a personal finish for your home. This is achieved by inserting a shaped bar in between the glass panes.

## **Astragal Bar**

Similar to Georgian bars but offers a more traditional finish by planting shaped bars on top of the glass panes thus creating depth to the design and the look of individual glass units.

## **Mock Horn**

Our Mock Horn feature enhances the aesthetics of your windows by achieving the appearance of a traditional vertical slider.



# “A DOOR RANGE TO ENHANCE





---

Combining high quality materials with first class performance and security - you can be assured our doors will give you peace of mind and an individual look to suit your home.

---

The right front door can create a great first impression when you enter your property. Patio, French-style, bi-fold doors are a great way to open up a room - and invite the outside in.

We offer all these options in a wide range of finishes - from PVCu doors to composite ones, from simple glazed designs to more ornate styles, with decorative glass or panelling.

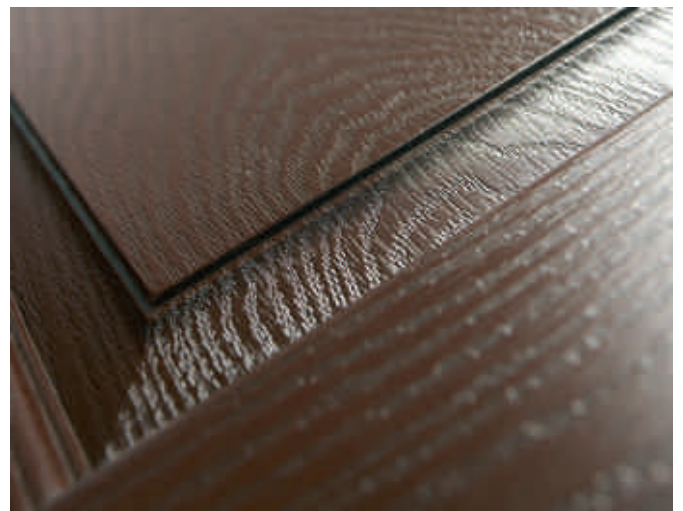
As well as being beautifully made, each door is designed to stand the test of time. So they not only work superbly as a barrier, they also enhance your home too.



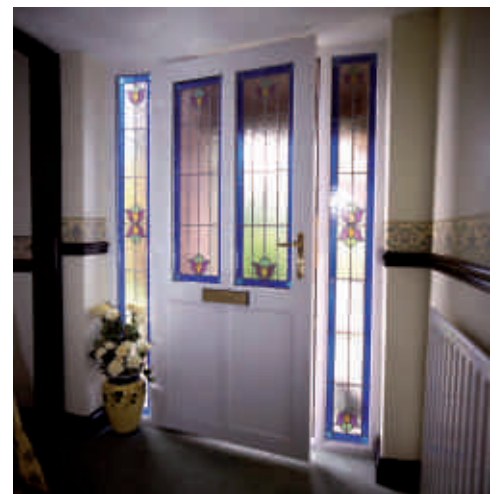
“A RANGE OF DOORS IN  
STYLES AND COLOURS  
TO SUIT EVERY TASTE”

# COMPOSITE DOORS

Our composite doors combine modern materials and performance with traditional looks to enhance the character of your home. Available in a wide variety of styles, colours and glass choices, they're designed to meet your every need.







# FRONT

PVCu Panel doors offer a wide range of designs and finishes. These can include full and half panel designs as well as sidelight options.





# FRENCH

Throw open French doors and invite the garden, terrace, balcony or country views inside. A breath of fresh air for your kitchen, lounge or dining room, these beautifully made doors come in a range of styles, colours and finishes to blend naturally with any home.



# PATIO DOORS

---

Bring the garden closer to the house and use it like another room. With easy access in summer and a wonderful view in winter, a patio door adds light and air to life – all year round.

---



 Finish options  
> GO TO 'TECHNICAL/3'

# BI-FOLDING DOORS

---

Bi-folding doors are the ideal way to provide extra space and connect inside living to the outside world. They can create a whole new feel for your home, linking rooms together and seamlessly joining inside living with outside space.

---

Versatile and aesthetically pleasing, bi-fold doors are the ideal replacement for existing patio or French doors to flood any room with natural light.

Amazingly flexible, bi-fold doors can be fully opened, partially opened or totally closed, depending on the amount of space available.



 **Finish options**  
> [GO TO 'TECHNICAL/3'](#)







AND VISUALLY STUNNING”



“A WONDERFUL  
WAY TO EXTEND





---

Most of us could do with more space and light in our homes – and what better way to achieve this than with a new conservatory?

---

Conservatories have more benefits than you might think. They don't just provide lots of extra room – our insulation means your new conservatory will retain heat in the winter, and won't be too hot in the summer. So it's a comfortable space for you to enjoy all year round.



# A VERSATILE SPACE FOR ALL OCCASIONS

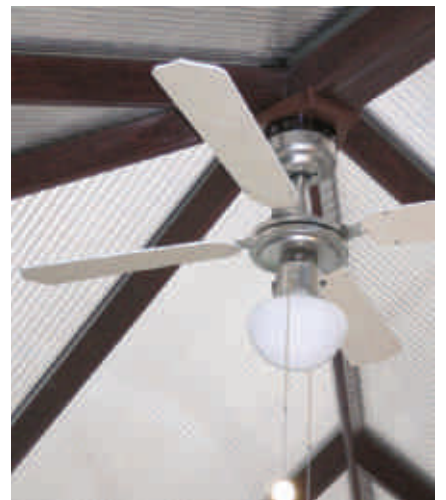
---

Deciding which style of conservatory is right for you can be fun – even if it's not always easy. First you'll want to consider how best to complement your home, and what you really hope to get out of your new room.

---

Will it be a study, perhaps, or a playroom? Or maybe you just want a bit more space to relax. When it comes to what you want, you're the expert!

So once you've given thought to your lifestyle and how your new room can reflect it, simply turn the page - you're sure to be able to find a conservatory that fits your needs.







TO  
RELAX AND ENJOY ALL YEAR  
ROUND”

# CHOOSING



## Victorian

A popular style distinguished by a faceted front, giving a curved appearance. A particular favourite with period properties, however it's clean lines make this a winner on any type of home.



## Georgian

A flat-fronted style that offers excellent use of floor space due to the square or rectangular internal shape. Its sloping roof and contemporary style is suited to the majority of properties.



## P-Shape

A P-Shape can combine a Lean-To and a Victorian to create a versatile and visually stunning open space. Due to the proportions needed, this style is better suited to larger properties, giving an impressive result.



## T-Shape

As with the P-Shape, this style is more suited to larger properties. A combination style that's distinguished by a central projection that can either be a Victorian, Gable or Georgian. A T-Shape offers a large and versatile floor space and is an impressive addition to any home.





Deciding which style of conservatory is right for you can be fun - even if it's not that easy. Sun room, living room or office - we'll help make it the perfect place.



### **Gable**

A gable-fronted conservatory adds a sense of grandeur to any home. Featuring the same rectangular floor space as a Georgian, a gable offers excellent use of internal space. The front panel of the roof remains upright rather than sloping back, to create a feeling of greater height within the conservatory.

### **Lean-To**

For properties with little room under the eaves or for those homeowners that prefer a clean simple look, a Lean-To conservatory is the ideal choice. The pitch of the roof can be varied, making this a versatile and ever-popular option.

### **Lantern**

The 'original' conservatory style, a Lantern ensures drama and grandeur. Distinguished by the two-tiered feature roof, the height within a Lantern adds an extra dimension to the feeling of light and space. A popular choice for swimming pool enclosures.

### **Custom**

Although the shapes and designs shown are all bespoke, you may have your own 'one-off', exceptional or unique idea. The doors, windows and roof systems in this brochure combined

with our expertise should allow you to achieve that dream.



Top tips for...

# CHOOSING YOUR CONSERVATORY



## 1. Use

What do you hope to get out of your new room? Will it be a study perhaps? Or a play-room? An office? Or maybe just an extra space to relax in. Whatever you choose, its use will determine how large you need your new space to be, and which layout will best accommodate your needs.

---



## 2. Materials

Your new space should fit seamlessly with your lifestyle. Materials such as PVC-u are incredibly hardwearing and low maintenance. No need for step ladders and re-painting, oil on the hinges and a wipe down every now and again will keep your conservatory looking like new.

---



## 3. Positioning

Think about the position of your conservatory. Those that face the South will receive the most sun during the day. If this is the case, you may need to consider extra ventilation and possibly blinds in order to block out some of the harsher rays.

---



## 4. Size

Once you've made a decision on your design, it might be best to check the dimensions of both your house and your garden. A conservatory should be an extension of your current living space, and shouldn't take up valuable garden space.

---



## 5. Glazing

New advancements have been made to ensure the glass used in conservatories works its hardest for the homeowner. Keeping you cooler in summer and warmer in winter means a conservatory isn't just a seasonal room.

---



## 6. Planning permission

If you're building a conservatory in England or Wales, you will not usually need planning permission. However, it is always better to be safe than sorry. If you are in any doubt always check as early as you can with your local council.

---



# WHATEVER

When planning how to make the most of your conservatory, there's a lot to consider – its size, shape, and of course, how much sun it gets.



Our heat reflective glass will ensure you enjoy your conservatory all year round. Its unique coating reflects almost twice as much solar energy as standard glass, and reduces the glare on those bright sunny days.



The unique coating reflects about 69% of total solar energy. Almost twice as much as standard glass.



Reduce potentially expensive heating bills. Our product outperforms standard glass by more than 50%.



Warm edge spacer technology increases the edge temperature by up to 65%.



This product is a world first, offering true self-cleaning glass that never stops working.



Glare is reduced by 44% all year round compared to standard units.



# TECHNICAL SPECIFICATION

**Windows** - from casement to modern tilt and turn, a style to suit every home.



## Casement

Casement windows consist of outward opening sashes and fixed lights. This most common product is available in a multitude of styles and various finishes. Sashes can open as side hung or top hung to suit application.

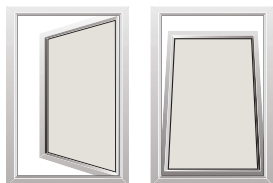
## Performance

All products manufactured to meet weather performance and operational and strength characteristics as specified in British Standard BS6375 Parts 1 and 2.

## Options

Mock Horn is an option to top hung casements. The bottom of the sash has an extruded feature to give the appearance of a Vertical Slider.

Can only be incorporated in top hungs that include a fixed light below.



## Tilt & Turn

Tilt & Turn windows consist of opening in sashes, which can be operated in two ways. Turn handle 90° to tilt top inwards with restrictors, turning handle a further 90° to open fully inwards, hinged on the side for access and cleaning. Available in a multitude of styles and finishes.

## Performance

All products manufactured to meet weather performance and operational and strength characteristics as specified in British Standard BS6375 Parts 1 and 2.

## Options

Mock Horn is an option to tilt & turns. The bottom of the sash has an extruded feature to give the appearance of a Vertical Slider.

Can only be incorporated in top hungs that include a fixed light below.



## Vertical sliders

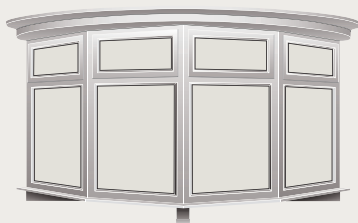
Our Vertical Slider combines traditional design with modern technology, available with a range of Georgian bars to create the required look. Both sashes slide vertically to open. They can also be tilted inwards for ease of cleaning..

## Performance

All products manufactured to meet weather performance and operational and strength characteristics as specified in British Standard BS6375 Parts 1 and 2.

## Options

Vertical Sliders are supplied as single products but can be coupled to any other product to achieve the required look, this includes box bays and multiple coupling.



## Bow windows

Our Bow windows offer you the versatility of creating the illusion of space and depth by allowing more light into your home without the need for additional building work.

## Options

Similar in appearance to a bay window which projects beyond the brickwork. However, the actual brickwork face remains flush with the main building structure. This type of window does not allow a person to walk into the bay area.

Commonly, available on 3, 4 and 5 segments.



## Bay windows

Bay windows retain the traditional look of your home creating space, character and allowing light to flood your room.

## Options

When three or more frames are fixed together and they project beyond the main face of the building. The brickwork above and below follows the contour of the actual window frames. Therefore allowing a person inside the building to walk into the bay area.

Box bay is when the side windows are at 90 degrees to the front.

Variable bay incorporates the side windows at an angle that allows them to be seen from the front.





## Doors - practical, stylish and secure.



### Front doors

Panel doors are of PVC construction, combining versatility in design with modern locking technology. Available to open inwards or outwards. A variety of styles are available which includes side light options. A variety of panel styles are also available which include many glass types. Further more various solid colour and woodgrain finishes are available.

#### Performance

All products manufactured to meet weather performance and operational and strength characteristics as specified in British Standard BS6375 Parts 1 and 2.

#### Options

To allow greater versatility all of our panel doors are available with a low threshold for easy access. Please see picture right.



### Composite doors

Combining the traditional look of timber with modern high performance materials to produce a range of traditional door styles in a variety of solid and wood effect finishes.

#### Performance

All products manufactured to meet weather performance and operational and strength characteristics as specified in British Standard BS6375 Parts 1 and 2.

#### Options

For additional styles and variations please refer to our composite door brochure.



### French doors

French doors are of PVC construction, combining versatility in design with modern locking technology. Available to open inwards or outwards. A variety of styles are available which can include midrails. French doors can also be designed with side panels to span larger openings.

#### Performance

All products manufactured to meet weather performance and operational and strength characteristics as specified in British Standard BS6375 Parts 1 and 2.

#### Options

A variety of full and half panel styles, or most popular full glass are also available.



### Patio doors

In-line PVC patio doors are ideal when opening area is at a premium as the sashes do not encroach into the surrounding space. Available in 2, 3 and 4 pane options, patio doors can even be supplied with a midrail to include a letterplate if required.

#### Performance

All products manufactured to meet weather performance and operational and strength characteristics as specified in British Standard BS6375 Parts 1 and 2.

#### Options

There are numerous bi-fold door styles from 2 to 6 panels with various opening combinations. Aluminum bottom track for improved operation.



### Bi-Fold doors

Designed to fully maximise any opening space, bi-fold doors are available from 2 to 6 panes in a variety of opening sequences to suit your needs. Larger styles can incorporate single or even double opening doors for day to day practical use.

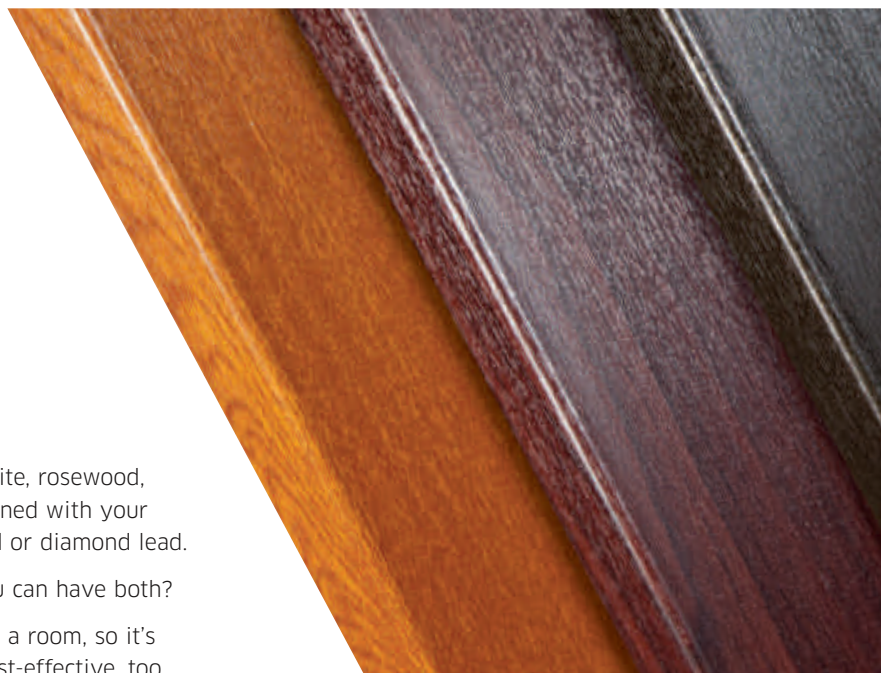
#### Performance

All products manufactured to meet weather performance and operational and strength characteristics as specified in British Standard BS6375 Parts 1 and 2.

#### Options

# FINISHES AND GLAZING

An exciting range of finishes, a vast array of glazing options and door furniture to suit every taste. The choice is yours - make a design statement.



## FINISH OPTIONS

The range is available in variety of finishes including white, rosewood, golden oak and a range of solid colours, all can be combined with your choice of glass design, including Georgian square, stained or diamond lead.

Why choose between elegance and practicality when you can have both?

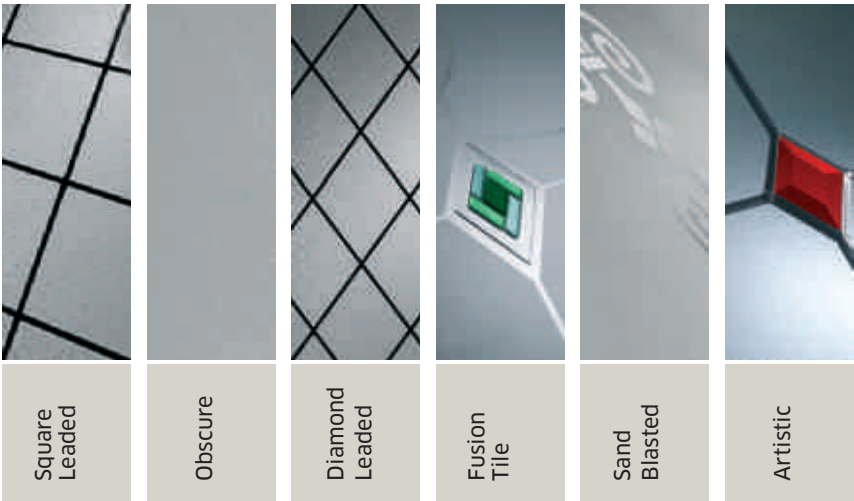
After all, the right window can make all the difference to a room, so it's important for it to look the part - and be reliable and cost-effective, too.

														
Antique Teak	Black	Cream	Golden Oak	Green	Grey	Irish Oak	Mahogany	Red	Rosewood	Rustic Cherry	Soft Cherry	White	Blue	Chartwell Green



# GLAZING

A vast array of glazing options are available. Patterned, Georgian, Stained and Leaded for example. We can help you through the selection process and ensure you choose the style that suits your requirements best.



Specification may change without notice.

# FURNITURE

An attractive range of door furniture is available in gold, white, black and chrome; enabling you to select what best suits your home and personal taste.



# GLOSSARY OF TERMS

## Q - Lon

All Duraflex windows use the Q-Lon weatherseal gasket. It has a 99% memory recovery and retains its shape year after year, which means the quality of the seal on your window is never compromised. The Q-Lon gasket also gives the best acoustic and thermal performance, resulting in a window which reduces noise pollution levels whilst providing protection from draughts.



## Multi-chambered

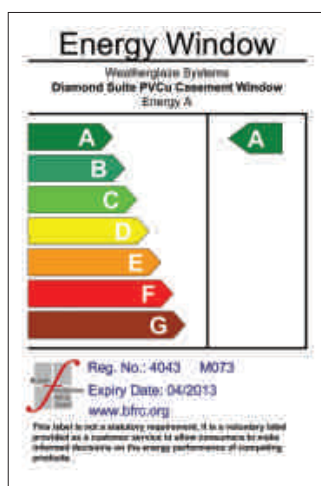
Our multi-chambered construction is designed to improve strength, thermal and acoustic performance by eliminating heat and sound transfer across the frame.



## Solar gain

Our energy efficient windows are manufactured using the latest technology in glass and spacer units.

This allows heat generated from your home to be reflected back into the room but also trap free heat from the sun through solar gain, thus maximising the thermal performance of our windows.



## WER'S and U values

Broadly there are two routes for compliance to energy rated windows:

- Window Energy Rating (WER), minimum 'C rated' or
- Whole window U value of 1.6 w/m2k or less

WER's are mostly used for domestic home improvement installations and is a method of demonstrating the overall energy performance of a window. Since October 2010, a minimum of C rated is required for all new window installations.

U values are used mostly for new build installations. They are a more specific, simple measure of the overall energy performance of a window. A minimum of 1.6 U value is required for all new window installations.



## PVCu

PolyVinyl Chloride Unplasticised is the material used in the manufacture of windows, doors and conservatories. A mix of Ethylene (derived from oil), Chlorine (derived from salt), stabilisers, lubricants and pigments, it is a low maintenance, colourfast, impact resistant material that is perfect for recycling and can be re-chipped, recycled and re-used with no detrimental effect.





### Environmental credentials (ISO 14001, Recovinyl, Calcium organic)

As the manufacturer of your window profile, Duraflex seek excellence in every aspect of business and, being conscious of the world we live in, we seek to set the same standards in our commitment to the environment. Two of the initiatives of Vinyl 2010 were the total elimination of Cadmium from PVC formulations and phasing out the use of lead based stabilisers. This latter requirement was to take place before 2015 with staged reductions being achieved by 2005 and 2010.

Duraflex, as with other major systems suppliers, had already removed all traces of Cadmium by the time of signing the Voluntary Commitment; it was therefore tasked with progressing the removal of lead based stabilisers from its formulation and replacing it with a more environmentally friendly Calcium organic product.



### Accreditations

Duraflex recognise the importance of providing customer confidence through 3rd party monitoring and has therefore achieved all the available and relevant accreditations for our industry.

Starting at the top with management systems to ISO9001 and ISO14001, these document the business processes and systems for controlling Quality and Environmental issues.

Both systems operate on the principles of 'continuous improvement', an area which is high on the agenda of any BSI/BBA audit. These are followed by the BSI Kitemarks and BBA Certificates for standard and enhanced security fabrication of both windows and doors.



### Energy Saving Recommended

All our products meet strict criteria on energy efficiency set out within the Energy Saving Trust Scheme. This means all our windows carry the Energy Saving Trust Recommended logo.



### CO<sub>2</sub>

Using energy for heating (or cooling) dramatically impacts the environment. Generating energy typically produces greenhouse gases such as CO<sub>2</sub>. The more energy we use, the more emissions we create.

By making buildings more energy efficient with windows, we can reduce energy use and prevent energy waste. In the UK alone, fitting better windows could reduce emissions by almost 5 million tonnes.

Science suggests man-made emissions play a major role in global warming and, in turn, influence climate change. Home energy use alone accounts for 27% of UK carbon dioxide (CO<sub>2</sub>) emissions which contribute to climate change.





# THE GALLERY









# THE GALLERY







## Weatherglaze

Clonattin Road, Gorey , Co. Wexford Ireland

Lo-call 1890 533 800  
[info@weatherglaze.ie](mailto:info@weatherglaze.ie)  
[www.weatherglaze.ie](http://www.weatherglaze.ie)





Weatherglaze windows offer eco-friendly, fully recyclable A-rated pvc windows manufactured to the highest of standards. Our pvc range is further supported with a full suite of bi-fold doors, vertical sliding sash windows, patio sliding doors, conservatories, single & double pvc doors, casement windows and tilt & turn windows.

All of our pvc products are 100% lead free and are fully recyclable and no harmful solvents are used in the preparation of our pvc. Weatherglaze are committed to recycling all of our waste material where possible and we strive to minimise our impact on the environment.



## Contact us now

Visit our newly open showroom to see how **Weatherglaze** can enhance your home and add value.

**Address:**  
**Clonattin Road**  
**Gorey**  
**Co. Wexford**  
**Ireland**

**Call: Lo-call 1890 533 800**  
**Email: [info@weatherglaze.ie](mailto:info@weatherglaze.ie)**  
**Web: [www.weatherglaze.ie](http://www.weatherglaze.ie)**

